

A close-up photograph of a black and white Friesian calf in a farm stall. The calf is looking through a horizontal metal bar, with its pink nose and mouth visible. A yellow identification tag is attached to its ear. The background shows the interior of a barn with wooden walls and straw bedding.

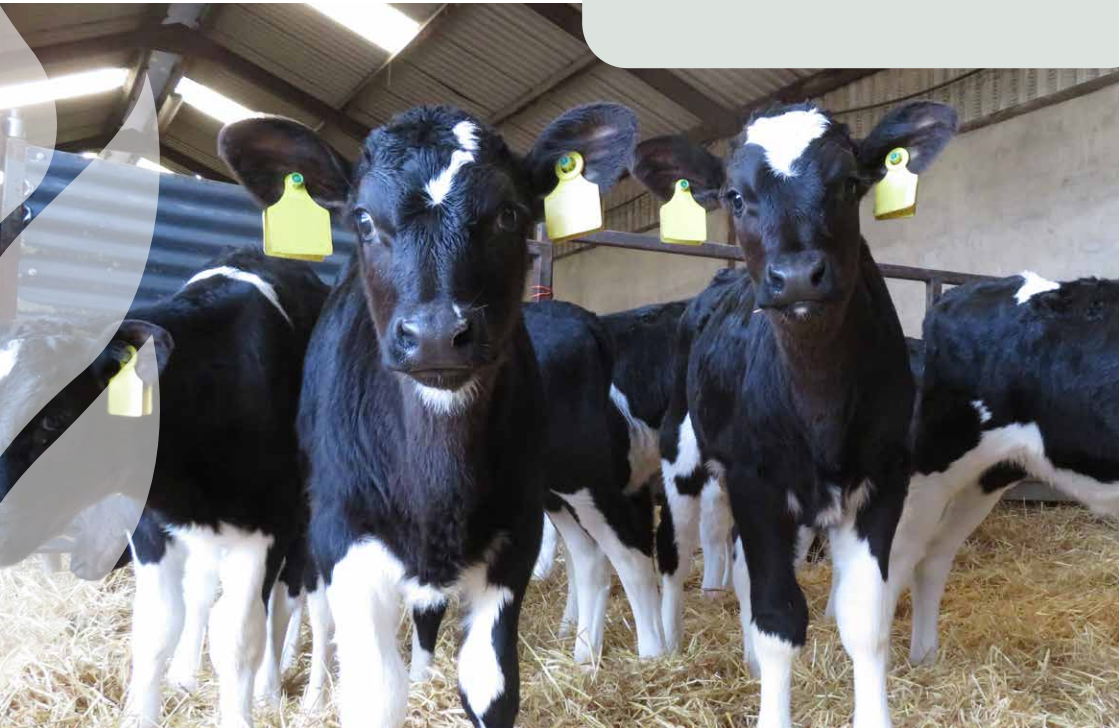
## CALF RANGE



## CALF MANAGEMENT

At Bretts, we understand how calf rearing impacts the overall health and performance of your calves as they mature into adult animals. We have formulated a milk replacer with this in mind, optimising the development of your calf and resulting in a healthy, mature animal capable of reaching its genetic potential in both dairy and beef systems. Our team will guide you through the calf rearing process to ensure you have the best management practices applied to your farm, so you can get more out of what you put in.

Feed efficiency is at its greatest during the pre-weaning period, therefore capitalising on the correct nutrition and management will maximise your animal's growth for the best return on investment. GoldStart Milk Replacer takes advantage of highly digestible whey protein to optimise the intake of both milk replacer and concentrates.





## GOLDSTART MILK REPLACER

- Easily mixed resulting in a consistent solution
- Is suitable for both automated calf feeders and bucket feeding
- Carefully formulated so that it is suitable for twice-a-day from birth and once-a-day feeding for calves that are older than 28 days
- Includes a “mothering smell” to stimulate intake and to ensure a successful transition onto milk replacer
- Contains increased levels of vitamins and minerals to maximise calf immunity
- Fibosel (yeast product) is included to stimulate the immune system and reduce disease risk
- Nuklospray, a specific powder treatment technology, is used to aid digestibility and absorption of protein and fats
- Specifically balanced amino acid profile to optimise the utilisation of dietary protein



## GOLDSTART EXTRA MILK REPLACER

Bretts EXTRA health package is a natural additive of specifically formulated essential oils and plant extracts, which gives the calf extra protection in the respiratory and digestive tracts.

This natural additive has a few modes of action to optimise calf health and immunity:

1. Increases mucus secretion to clear the airways
2. Induces an antibacterial effect against pathogens that cause respiratory infections
3. Degrades the integrity of protozoa (including coccidia and cryptosporidia), allowing the animal to build up a natural defence and reduce the incidence of scours



**GOLDSTART**  
CALF MILK REPLACER



## ANALYTICAL CONSTITUENTS

<b>Protein</b>	24%
<b>Fat</b>	18%
<b>Fibre</b>	0%
<b>Ash</b>	7.7%
<b>Vitamin A iu/kg</b>	25,000
<b>Vitamin D3 iu/kg</b>	5,000
<b>Vitamin E mg/kg</b>	500



Why not continue with the benefits of the EXTRA package, also available in our Ultra Calf 18 Cubes EXTRA



## CALF FEED RANGE

Bretts recognise that the calf is the future of any dairy or beef system. We have carefully formulated a feed range to ensure calves get the best start in life and grow to their genetic potential for improved lifetime performance as an adult animal.



### Ultra Calf Cubes 18%

The key to the success of our calf range is that we continue the beneficial additives from GoldStart Milk Replacer to Ultra Calf Cubes. Use Ultra Calf Cubes from birth to 6 months of age to ensure your calves receive a consistent supply of feed additives guaranteed to get your calves off to a healthy start.

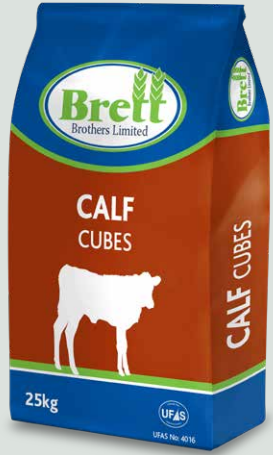
Ultra Calf Cubes contain Rumi-Start which encourages early feed intake to develop the rumen, maximise the health of the calf and prepare the calf for the post weaning period.



### Heifer Rearer Cubes & Ration 18%

Bretts Heifer Rearer feeds are formulated with the sole purpose of growing replacement heifers to achieve target weights at breeding and calving, thus improving longevity in the herd.

- Research has shown that protein promotes good mammary development, prevents fatty tissue depositing in the udder and maximises future milking ability
- High levels of calcium and phosphorus promote bone growth and development of skeletal frame
- Well balanced with minerals and trace elements, essential for good reproductive cycling



Ask for Ultra Calf Cubes to include Brett's EXTRA Health Package

[www.brettbrothers.ie](http://www.brettbrothers.ie)

 @BrettBrothersKK

 Brett Brothers Limited

Brett Brothers Ltd.,  
Callan,  
Co. Kilkenny

Tel: 056 7755300

Brett Brothers Ltd.,  
Windgap,  
Co. Kilkenny

Tel: 051 648204

Brett Brothers Ltd.,  
Ardfinnan,  
Co. Tipperary

Tel: 052 7466208

Brett Brothers Ltd.,  
Portlaw,  
Co. Waterford

Tel: 051 387396